

Charm® Peel Plate® Microbial Tests

Simplified Culture Method For Detecting Microorganisms



Product Overview


Charm® Peel Plate® Microbial Tests are simplified culture methods for detecting micro-organisms.

AOAC-RI has recently granted performance tested method status to Charm Peel Plate AC and EC tests. The methods follow conventional microbiologic procedures for time and temperature of incubation. An air gap between the plate and cover allows colony picking and determination of microbial morphology. There are 1 mL sample volume Peel Plate tests for aerobic bacteria (Peel Plate AC test), coliform count (Peel Plate CC test), coliforms/*E. coli* (Peel Plate EC test), enterobacteriaceae (Peel Plate EB test) and yeast and mold (Peel Plate YM test), for use in dairy products, ground meats, other foods, contact environmental surfaces and water. A 5 mL sample volume test is also available for some of these tests. Each version of these tests contains non-selective or selective medium with color producing enzyme substrates to produce visual colonies.

PROCEDURE

The tests are prepared media in a shallow dish with an adhesive top. Just add the sample to the middle and it diffuses through the media and solidifies. Invert the test, stack multiple tests together (if appropriate) and incubate. The Peel Plate tests are intended for microbiological laboratories, but may also be used by food quality stakeholders such as farmers, milk processors, and water municipalities.

Simple Procedure

- 

LIFT
- 

PEEL
- 

VERTICALLY PIPET
within 2 to 3 seconds
- 

SEAL
- 

INCUBATE
at specified temperature
and times
- 

COUNT

About Peel Plate Tests

Order Codes



Peel Plate AC Microbial Test
Peel Plate AC Microbial Test
Peel Plate AC Microbial Test



Charm Peel Plate AC Microbial Tests (Aerobic Count) use conventional standard plate count formulation with red producing TTC enzyme substrate. Aerobic bacteria produce red spots that are quantified over the 48 hour incubation.

Order Codes	Quantity of Tests
PP-AC-50K	50 tests
PP-AC-100K	100 tests
PP-AC-1000K	1000 tests



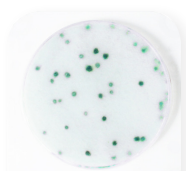
Peel Plate EC Microbial Test
Peel Plate EC Microbial Test
Peel Plate EC Microbial Test



Charm Peel Plate EC Microbial Tests (*E. coli* and Coliform) use conventional EC media with color producing enzyme substrates and a 24 hour incubation. Coliforms produce easy to interpret red colonies. Generic *E. coli* produce blue/purple colonies.

A high volume version, **Peel Plate EC HV test**, is available for 5 mL sample.

Order Codes	Quantity of Tests
PP-EC-50K	50 tests
PP-EC-100K	100 tests
PP-EC-1000K	1000 tests
PP-ECHV-10K	10 tests
PP-ECHV-100K	100 tests



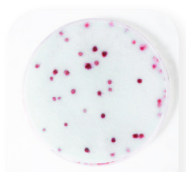
Peel Plate YM Microbial Test
Peel Plate YM Microbial Test
Peel Plate YM Microbial Test



Charm Peel Plate YM Microbial Tests (Yeast and Mold) use conventional potato dextrose formulation with 3 to 5 days incubation at 25 °C and produces blue/green colonies.

A high volume version, **Peel Plate YM HV test**, is available for 5 mL sample.

Order Codes	Quantity of Tests
PP-YM-50K	50 tests
PP-YM-100K	100 tests
PP-YM-1000K	1000 tests
PP-YMHV-10K	10 tests
PP-YMHV-100K	100 tests



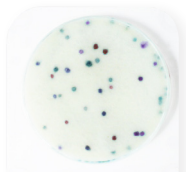
Peel Plate CC Microbial Test
Peel Plate CC Microbial Test
Peel Plate CC Microbial Test



Charm Peel Plate CC Microbial Tests (Coliform) use conventional EC media with color producing enzyme substrates and a 24 hour incubation. Coliforms produce easy to interpret red colonies.

A high volume version, **Peel Plate CC HV test**, is available for 5 mL sample.

Order Codes	Quantity of Tests
PP-CC-50K	50 tests
PP-CC-100K	100 tests
PP-CC-1000K	1000 tests
PP-CCHV-10K	10 tests
PP-CCHV-100K	100 tests

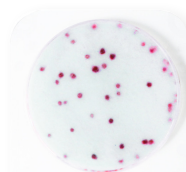


Peel Plate EB Microbial Test
Peel Plate EB Microbial Test
Peel Plate EB Microbial Test



Charm Peel Plate EB Microbial Tests (*Enterobacteriaceae*) use conventional EB formulation with 48 hour incubation at 37 °C and produces colored colonies.

Order Codes	Quantity of Tests
PP-EB-50K	50 tests
PP-EB-100K	100 tests
PP-EB-1000K	1000 tests



Peel Plate HET Microbial Test
Peel Plate HET Microbial Test
Peel Plate HET Microbial Test



Charm Peel Plate HET Microbial Tests (Heterotrophic Count) use conventional R2A formulation with red producing TTC enzyme substrate. Aerobic bacteria produce red spots that are quantified over the 48 hour incubation at 35 °C.

Order Codes	Quantity of Tests
PP-HET-50K	50 tests
PP-HET-100K	100 tests
PP-HET-1000K	1000 tests

BENEFITS OF CHARM PEEL PLATE MICROBIAL TESTS

- Ready-to-use. Just add sample/dilution. No spreading device needed.
- Etched grid lines for estimated counts.
- Colonies easily picked for additional isolation/classification
- Convenient plate stacking for improved air circulation
- Buffered formulation – pH not required for most samples
- 12 month refrigerated shelf-life in a resealable foil zip bag
- 47 mm diameter convenient for sample filters and 100 mL water samples or larger, like water, wine and beverages
- Robust performance with neutralizing buffers used in environmental surface samples

STACKABLE!



Validation Matrix^A

	Peel Plate CC ^B , Peel Plate EB ^B , and Peel Plate EC test	Peel Plate AC test	Peel Plate HET test	Peel Plate YM test
Dairy				
Raw Milk	✓	✓		
Fluid & Flavored Milk	✓	✓		✓
Creams	✓	✓		
Cultured Dairy Products	✓	✓		✓
Cheese	✓	✓		
Ice Cream Mixes	✓	✓		✓
Powdered Milk	✓	✓		
Condensed Milk & Whey	✓	✓		
UHT Fluid Milks	✓	✓		
Eggnog & Flavored Creams	✓	✓		
Non Dairy				
Bottled Waters	✓		✓	
Environmental Swab	✓	✓		✓
Irrigation & Rinse/Flume Water	✓		✓	
Dry Pet Food	✓	✓		
Raw Meat	✓	✓		
Carcass Rinse & Sponge	✓	✓	✓	
Liquid Pasteurized Egg	✓	✓		
Juices				✓
Fruit				✓
Corn Flour & Tortillas				✓
Salad Dressing				✓

^AContact Charm Sciences for a full list of Validations or visit www.charm.com

^BPeel Plate EB & Peel Plate CC test Validations are in process

Peel Plate Tests



Peel Plate AC Test



Peel Plate EC Test



Peel Plate YM Test



Peel Plate CC Test



Peel Plate EB Test



Peel Plate HET Test



659 Andover Street, Lawrence, MA 01843-1032, USA
 T +1.978.687.9200 | F +1.978.687.9216 | E info@charm.com | www.charm.com

© 2016 Charm Sciences, Inc. Charm and Peel Plate are registered trademarks of Charm Sciences.
 See www.charm.com/patents for a list of U.S. issued patents and pending, published U.S. and PCT applications.
 MRK-1052-002 Jul-2016